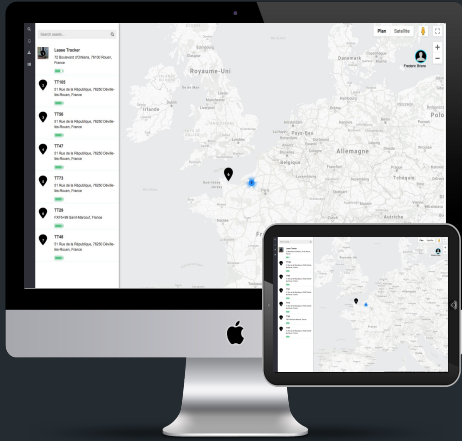




Reinventing Asset Tracking



Supply chain is facing multiple challenges that existing solutions (RFID, Barcode, etc.) do not fully address:

- Lack of accuracy: delivery delays, lost inventory
- Limited traceability: no real time tracking, estimated location of goods
- Poor SKU management: inaccurate inventories and inefficient delivery routes

Upgrade Your Supply Chain Management With DirectView and Outsmart Your Competitors

DirectView aims to help organizations reinvent their supply chain to drive continuous and sustainable business value. It enables them to:

- Control supply chain operations in details
- Improve tracking of individual goods by leveraging latest IoT technologies
- Facilitate accurate inventory management and authentication.

What is DirectView?

DirectView is a **Plug n Play asset tracking solution** allowing organizations to fully **monitor and control** their supply chain in real time with a **unique combination** of bluetooth, GPS and wireless technologies.



About

Head office
Directional Systems Tracking
Ltd.
3700 Parkway
Solent Business Park
Fareham
PO15 7AW
United Kingdom

For France
BigVista S.A.S.
51 rue de la république
76250 Déville lès Rouen
France
+33 (0)2 35 76 47 06

Directional Systems Tracking Limited is registered in England under company number 11609574

Patented Technology

Unique, patented technology used to provide end-to-end direct view of tracked items.

Benefits

- **Control:** DirectView provides end-to-end supply chain visibility (both real time and history). Geofencing alerts warn you of any movements beyond designated areas.
- **Simplicity:** DirectView is a plug n play solution that is easy to configure: Scan the tag, Attach the tag to an item, Track the item.
- **Savings:** DirectView is a cost-effective solution - improves inventory management, traces and authenticates goods, optimizes delivery routes, deters theft.

Products Specifications



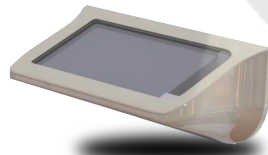
PopTag 10

- Lifetime 10 years
- Water/dust resistant IP67
- Streams data every 10 seconds
- Bluetooth 5 Range 160 meters
- Temperature monitoring/ alerts
- 54mm x 25mm x 6,8mm



PopTag 3

- Lifetime 3 years
- Water/dust resistant IP67
- Streams data every 10 seconds
- Bluetooth 5 Range 160 meters
- Temperature monitoring/ alerts
- 45mm x 25mm x 3,5mm



Spotter

- Solar charged
- On 24/7
- Worldwide network connectivity
- Full satellite Google map tracking
- Water/dust resistant IP67
- Logs/streams data every 1 second
- High impact polycarbonate casing
- 320mm x 150mm x 180mm



Spotter units transmit data dynamically to/from more than **500** PopTags simultaneously to a cloud-based server.